



HAIRPIN

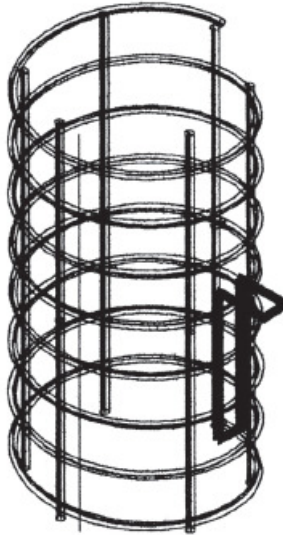
SHAFTSPACER EXTENDER

Installation Instructions

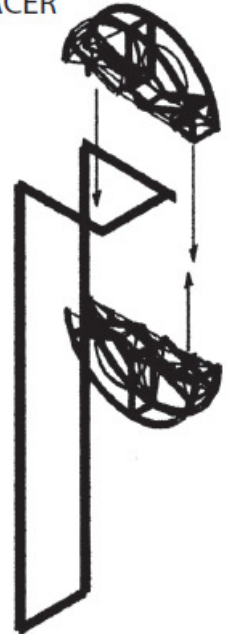
STEP 1:
THE BASIC
OFFSET HAIRPIN



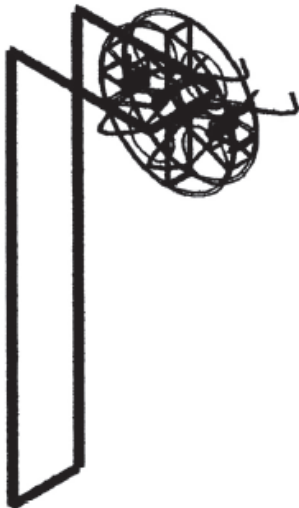
STEP 2:
WIRE HAIRPIN TO CAGE



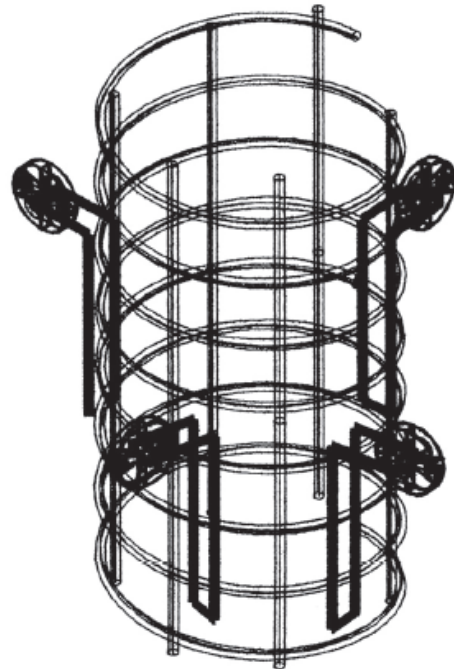
STEP 3: ASSEMBLE
SHAFTSPACER



STEP 4: DOUBLE WIRE HALVES
OF SHAFTSPACER - 16 GAUGE TIE WIRE



STEP 5: MULTIPLE
ASSEMBLY COMPLETED



**Foundation
Technologies, Inc.®**

PO Box 491718
Lawrenceville, GA 30049
1.800.773.2368 FAX 678.407.4645
www.foundationtechnologies.com
info@foundationtechnologies.com