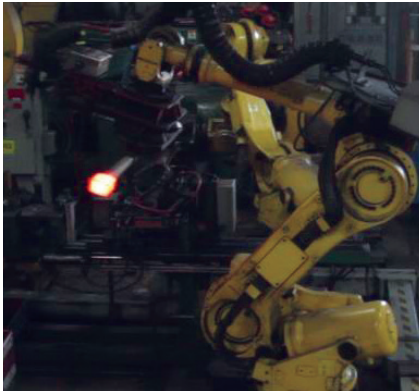


ENGINEERING EXCELLENCE

We didn't just follow the ground rules, we invented them.



FOUNDATION SYSTEM | 30-YEAR PRODUCT WARRANTY

Protect Your Family.

When foundation repair is needed, the value and safety of the structure is at risk. Maintenance is a crucial preventative measure to protect the health and well being of your home. Excessive settlement can be detrimental to your home's load bearing capacity.

Whether the issue is caused by expansive clay, poor soil density, improper maintenance, or faulty construction... Carolina Foundation Solutions is here to help.

Protect Your Foundation.

By choosing to work with Carolina Foundation Solutions you are guaranteeing that your home's foundation will be corrected by the highest trained professionals in the industry. CHANCE certified installers are required to re-certify their credentials every two years. America's Ground Force will deliver on its promise, every time.

We are so confident that we stand behind each product, each system and every single installation.

WHY CHANCE® PRODUCTS?

NEVER COMPROMISE™ on quality.

- 100 years of structural engineering experience.
- Quality control process to ensure each product is of the highest quality.
- Made in the U.S.A.
- Hot dip galvanizing provides optimum long-term corrosion protection.
- Only new and unused mill traceable steel.

As the oldest, largest and most experienced foundation specialists in the country you can rest assured that your home will be repaired properly by the highest trained professionals in the industry. Carolina Foundation Solutions is a certified CHANCE installer and uses only CHANCE and ATLAS brand products.



CHANCE® Civil Construction

TRUSTED SOLUTIONS

30 YEAR PRODUCT WARRANTY
LOCAL INSTALLING WARRANTY

EXPERIENCE THAT'S WEATHERED THE TEST OF TIME.

CHANCE Alliance Network Installers are experienced professionals that provide dependable engineering-based solutions. The CHANCE Alliance Network is America's Ground Force.

“ The crew was very professional and went out of their way to protect my yard. I was impressed in the use of plywood to protect the grass. ”

- John

“ We could not have asked for any better workers than the two that were assigned to the job. They were dedicated to doing a great job and were very professional... ”

- Marlyn Morton



LARGEST NETWORK OF FOUNDATION REPAIR EXPERTS IN THE INDUSTRY

CALL TODAY **855.477.2121** Over 1,400 highly trained installers!

Done Right the First Time!

When you work with a CHANCE Alliance Network member, you'll enjoy the peace of mind knowing your home is being repaired with the industry's highest quality products by only the best, most experienced installers.

Rest assured that you will be provided with an honest value for your investment.

Each site visit is used to properly assess the damage of the home and gather needed information so that a customized plan can be worked up to meet the specific structural needs with an engineering-based solution.

Proudly Serving:

ALABAMA	KANSAS	NORTH DAKOTA
ALASKA	KENTUCKY	OHIO
ARIZONA	LOUISIANA	OKLAHOMA
ARKANSAS	MAINE	OREGON
CALIFORNIA	MARYLAND	PENNSYLVANIA
CANADA	MASSACHUSETTS	PUERTO RICO
CARIBBEAN	MICHIGAN	RHODE ISLAND
COLORADO	MINNESOTA	SOUTH CAROLINA
CONNECTICUT	MISSISSIPPI	SOUTH DAKOTA
DELAWARE	MISSOURI	TENNESSEE
DIST. OF COLUMBIA	MONTANA	TEXAS
FLORIDA	NEBRASKA	UTAH
GEORGIA	NEVADA	VERMONT
HAWAII	NEW HAMPSHIRE	VIRGINIA
IDAHO	NEW JERSEY	WASHINGTON
ILLINOIS	NEW MEXICO	WEST VIRGINIA
INDIANA	NEW YORK	WISCONSIN
IOWA	NORTH CAROLINA	WYOMING



CHANCE Civil Construction | Hubbell Power Systems, Inc. | 210 North Allen Street | Centralia, Missouri 65240 | U.S.A.



Because Hubbell has a policy of continuous product improvement, we reserve the right to change design and specifications without notice.

© Copyright 2012 Hubbell Incorporated | Printed in the U.S.A. | Bulletin BR04009E

Our products are made with 90% recycled material.

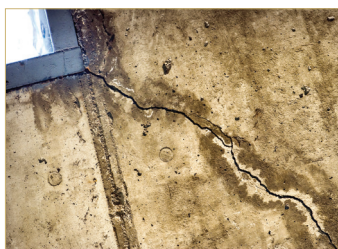
CHANCE Civil Construction | www.hubbellpowersystems.com/abchance



LARGEST NETWORK OF FOUNDATION REPAIR EXPERTS IN THE INDUSTRY

RECOGNIZING FOUNDATION PROBLEMS

» Cracks in Ceiling, Basement Wall, or Exterior Siding



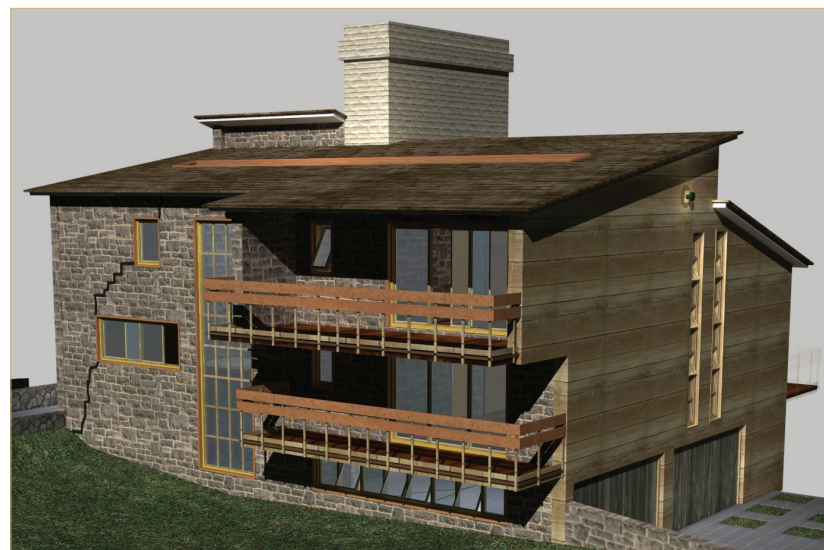
» Gaps around Window Sills and Doors



HOW FOUNDATION REPAIR HEALS YOUR HOME

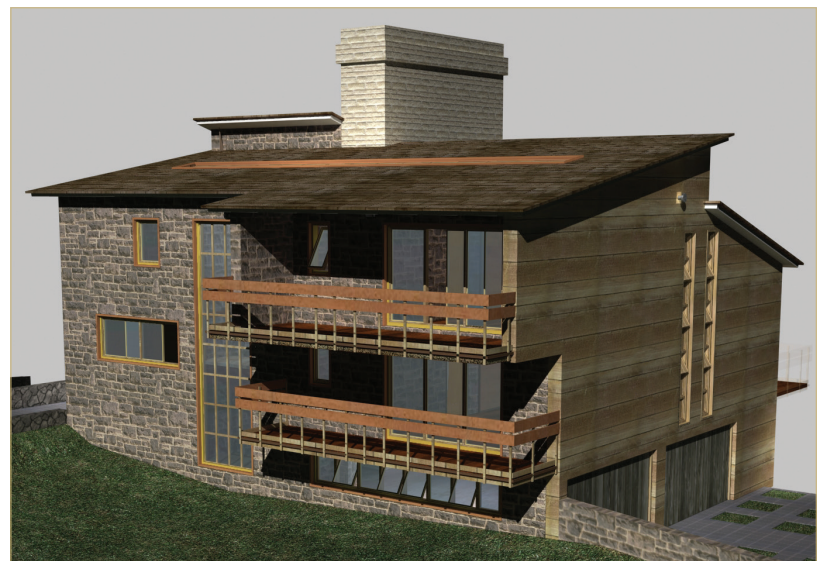
Watch for these warning signs. Monitoring your home can keep a foundation problem from escalating.

BEFORE



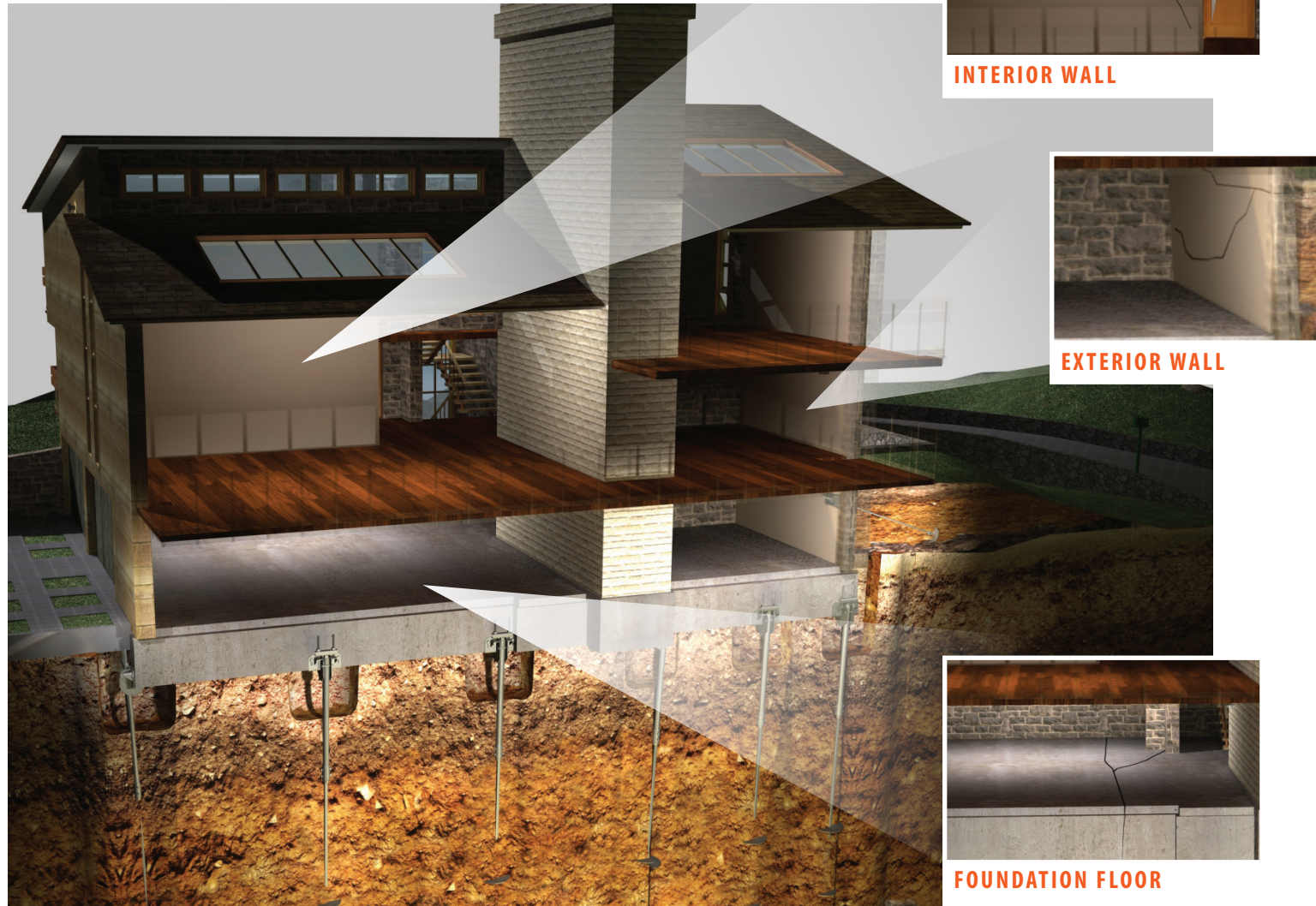
A typical stair step crack, most noticeable in brick homes. Not all foundation problems are this easy to see.

AFTER



A certified CHANCE Installer can diagnose your foundation problem and prescribe the best solution to heal your home.

RESULTS



INTERIOR WALL



EXTERIOR WALL



FOUNDATION FLOOR

EXPANSIVE SOILS AND FOUNDATION SETTLEMENT

Over a fourth of all the homes in the United States rest on expansive soils.

INADEQUATE DRAINAGE



Poor drainage is a major factor in causing the over saturation of soil.

HIGH EXPANSIVE MINERAL PRESENCE

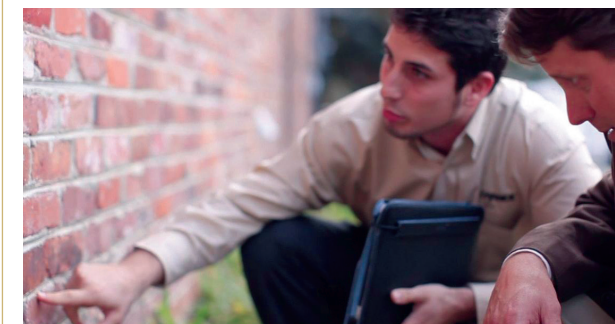


An unstable base for a home's foundation will result when a considerable amount of water is absorbed and lost.

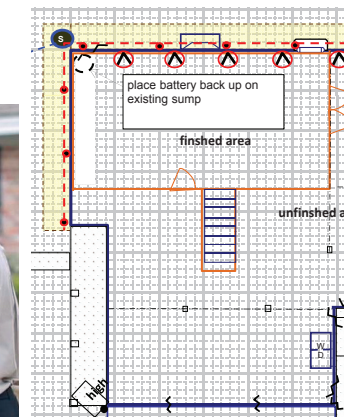
WHAT YOU CAN EXPECT DURING A FOUNDATION REPAIR

THE CHANCE® HELICAL UNDERPINNING PROCESS

1 A certified CHANCE Installer will inspect the condition of your home's foundation.



2 You will receive a customized foundation repair plan.



3 Your home is prepared for the new foundation support system.



EXCAVATION

4 Helical piles and brackets are selected and spaced at proper intervals to support the load of your home.



INSTALLATION PREPARATION

5 The helical piles are screwed into the stable subsoil until the prescribed depth is reached. L-shaped brackets on top of each helical pile connect to the base of the foundation wall.



UNDERPINNING INSTALLATION

6 The weight of your home is shifted to the new foundation support system and adjusted using hydraulic equipment.